

Automotive Aftermarket



 APACHE





We're committed to you!

Dear Automotive Products User:

Apache is privileged to have you as a customer. You are one of the reasons that we are the industry's premier supplier of automotive hoses and hose accessories. Apache takes great pride in stocking the items you need, shipping them to you on-time, and introducing new and innovative products.

We value you as our business partner and look forward to serving you now and in the future.

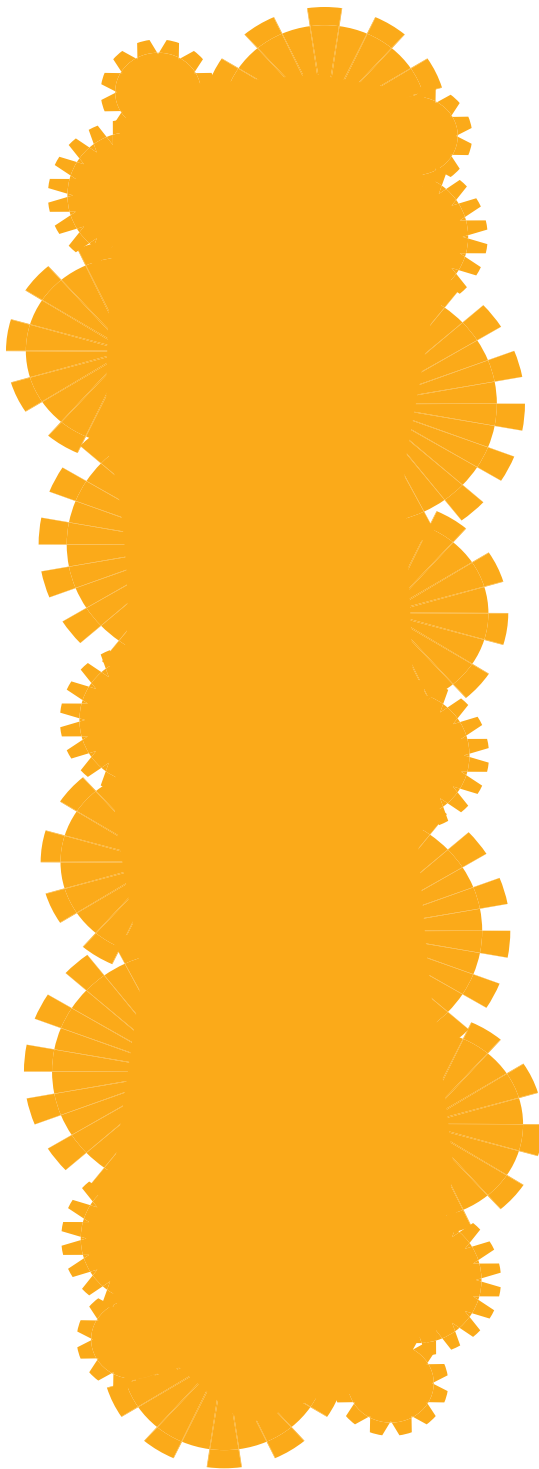
A handwritten signature in black ink that reads 'Tom Pientok'.

Tom Pientok
President and COO

www.apache-inc.com



Apache is proud to be a participating distributor in the NAHAD Listed Members Program. As a NAHAD Listed Member, Apache utilizes and follows the association hose assembly guidelines for the Fabrication of Industrial Hose Products and the Fabrication of Hydraulic Hose Products. These hose assembly guidelines offer an important base-line performance measure to ensure safer and higher quality assemblies. Another reason why... Apache is the premier provider of automotive products to the automotive market.



INDEX

AIR HOSE

Couplings	4
Hoses	2-4
Reels	4

HYDRAULIC HOSE

Gates	6
Universal Bulk SAE 100R1AT	6
Universal Bulk SAE 100R2AT	6

MISCELLANEOUS

Curb Pump Hose	12
Fuel Line	5
Fuel Nozzle	12
Heater Hose	5
Twin Line Welding Hose	11
Water Hose	11
Windshield Wiper/Vacuum Hose	5

Pressure Washer

Accessories	10
Adapters	10
Guns	8
Hoses	7
Nozzles	9
Pumps	10
Tips	10
Wands	9

AIR HOSE

Heavy-Duty EPDM Rubber

Features: Red EPDM cover with black class C limited oil resistant tube. **Applications:** Air tool, water (hot or cold), agricultural spray and general service. Excellent ozone and aging resistance, highly abrasive resistant.

Temp. range: Lightweight and flexible from -40°F to +212°F.

Contact customer service for pricing. Oil resistant hose available.



Apache P/N	Color	I.D. X O.D.	W.P.	Length	Wt./100	Source
10035600	Red	1/4" x 9/16"	300	500	12#	Domestic
10035620	Red	3/8" x 11/16"	300	500	17#	Domestic
10035630	Red	1/2" x 7/8"	300	500	25#	Domestic
10035650	Red	3/4" x 1-13/32"	300	500	37#	Domestic

Self-Coiling Nylon

Assemblies: Coupled 1/4" MNPT reusable swivel fittings with spring guards and tails on each end for easier tool handling and comfort. Fittings have thread sealant applied from the factory. **Features:** Self-coiling air hose saves space/time and is easy to store. Can be used in both horizontal and vertical applications, excellent hose for shop and industrial applications. **Applications:** 12' length designed for portable air tanks and workbench/workstation air tool supply. 25' length for applications requiring additional reach. For use with blow guns, grinders, drills, nut setters, riveters, sprayers, and sanders.



Apache P/N	I.D. x Length	W.P.	Wt. Ea.	Source
15025018	1/4" x 12'	250	0.45#	Import
15025995	1/4" x 25'	250	0.60#	Import
15026021	3/8" x 25'	250	1.25#	Import

Lightweight Premium PVC

Assemblies: 300 PSI W.P. — 1,200 PSI Burst Pressure. **Fittings:** 1/4" MNPT. Bend restrictors on both ends. **Applications:** For air compressors, staplers, nailers, and other pneumatic tools in the shop or industrial applications. **Construction:** Premium PVC air hose assemblies are lighter than rubber hose and feature oil and abrasion resistant tube and cover, flexible/kink resistant construction, and excellent operating temperature range.



Apache P/N	Color	I.D. x Length	Wt. Ea.	Source
98108760	Blue	1/4" x 25'	2.3#	Import
98108765	Blue	1/4" x 50'	4.3#	Import
91004990	Blue	3/8" x 25'	4.0#	Import
91005010	Blue	3/8" x 50'	7.0#	Import
91009210	Red	3/8" x 25'	4.0#	Import
91009215	Red	3/8" x 50'	7.0#	Import

AIR HOSE

Extreme Flex

Features: Specially formulated thermoplastic compounds provide extreme flexibility in severe cold and temperatures. Light weight of PVC and durability of rubber, without cold temperature stiffness, for easy handling. **Construction:** Coupled 1/4" MPT fittings with bend restrictors on each for longer service life. Highly abrasion resistant, non-marking cover. Stronger wall and tighter fabric reinforcement improve hose kink resistance and working/burst pressure without sacrificing flexibility.

Temp. range: -40°F to 150°F.

Apache P/N	I.D. x Length	W.P.	Fittings	Wt. Ea.	Source
10130348	3/8" x 25'	300	1/4" MPT	2.6#	Import
10130350	3/8" x 50'	300	1/4" MPT	5.3#	Import



Rubber

Assemblies: Coupled 1/4" solid brass MNPT fittings with PVC bend restrictors on each end for longer service life. 1/2" is coupled 1/2" MNPT. **Applications:** For air compressors, and other pneumatic tools in the shop or industrial use. **Construction:** Rubber air hose with synthetic yarn reinforcement. More flexible than PVC in extremely cold temperatures. Limited oil resistance.

Apache P/N	I.D. x Length	W.P.	Fittings	Wt. Ea.	Source
91009080	3/8" x 25'	300	1/4" MNPT	5#	Import
91009085	3/8" x 50'	300	1/4" MNPT	9#	Import
91009090	1/2" x 25'	300	1/2" MNPT	6#	Import
91009095	1/2" x 50'	300	1/2" MNPT	12#	Import



Premium Rubber

Assemblies: Coupled 1/4" solid brass MNPT fittings with PVC bend restrictors on each end for longer service life. 1/2" is coupled 1/2" MNPT. **Applications:** For air compressors, and other pneumatic tools in the shop or industrial use. **Construction:** Premium EPDM rubber air hose assembly features excellent operating temperature range, heat, weather (ozone), and abrasion resistance. More flexible than PVC in extremely cold temperatures. Limited oil resistance.

Apache P/N	I.D. x Length	W.P.	Fittings	Wt. Ea.	Source
91009280	3/8" x 25'	325	1/4" MNPT	5#	Domestic
91009285	3/8" x 50'	325	1/4" MNPT	9#	Domestic
91009290	1/2" x 25'	325	1/2" MNPT	6#	Domestic
91009295	1/2" x 50'	325	1/2" MNPT	12#	Domestic



Air Tool Lead-In/Whip-Hose

Assemblies: Red rubber hose coupled 1/4" male NPT 360° ball swivel x 1/4" female NPT.

Features: Absorbs shock and relieves strain on air couplers used with pneumatic impact tools. Improves operator comfort and extends coupler service life. Limited oil resistance. Domestic oil resistant assemblies available.

Apache P/N	I.D. x Length	W.P.	Wt. Ea.	Source
10130400	1/4" x 24"	300	0.25#	Import
10130401	1/4" x 60"	300	0.40#	Import
10130402	3/8" x 24"	300	0.30#	Import
10130403	3/8" x 60"	300	0.56#	Import



AIR HOSE PRODUCTS

PUSH-ON HOSE



Application: For general industrial, maintenance, and automotive applications. **Construction:** Black nitrile cover, oil and heat resistant tube. One braid of high strength synthetic cord reinforcement laid at a precise angle for maximum strength and coupling-holding ability. Black Nitrile, oil, weather, and abrasion resistant cover. **Features:** Will handle petroleum oils, gasoline, air, water, diesel fuels, and lubricating oils.

Temp. range: -40° to 180°F. **Fittings:** Designed for use with push on fittings — needs no clamps or ferrules. NPT male and female, JIC 37° male and female, SAE 45° male and female and hose menders are available. (Contact customer service for fitting options.)

Apache P/N	I.D. x O.D.	W.P.	Burst	Wt./C FT.	Source
39001300	1/4" x 1/2"	250	1,000	9#	Domestic
39001350	3/8" x 5/8"	250	1,000	13#	Domestic
39001400	1/2" x 3/4"	250	1,000	17#	Domestic

Hand Crank Air Hose Reels



Features: Heavy-duty all steel construction with corrosion resistant powder coating. Reel can be mounted in any direction. 1/4" FNPT inlet, spring tension brake for smooth operation and 3' lead-in/connection hose are standard. **Includes:** 3/8" I.D. 300PSI abrasion resistant rubber hose with 1/4" MNPT coupling and bend restrictor. Hose has limited oil resistance.

Apache P/N	I.D. x Length	W.P.	Wt. Ea.	Source
99023955	3/8" x 50'	300	17.60#	Import
99023957	3/8" x 100'	300	28.00#	Import



Auto Rewind Reel

Features: Steel construction with corrosion resistant powder coating. Reel can be mounted in any direction. Auto-rewind mechanism automatically locks hose at desired working length. 1/4" FNPT inlet, stationary mounting bracket with hose guide arm, adjustable hose stop and 3' lead-in/connection hose are standard. For applications with limited oil contact. **Includes:** 3/8" I.D. 300PSI rubber hose with 1/4" MNPT coupling and bend restrictor.

Apache P/N	I.D. x Length	Bracket	W.P.	Wt. Ea.	Source
99023961	3/8" x 50'	Single	300	38.25#	Import
99027700	3/8" x 50'	Single	300	41.00#	Domestic

COUPLINGS



- Industrial/Milton, Automotive & ARO Styles
- Fittings: Male/Female, Solid/Swivel
- Quick Couplers & Plugs: Industrial/Milton, Automotive
- Hose Repair Kits for PVC/Rubber
- Hose Repair Kits for Polyurethane
- Bulk Fittings, Ferrules, Clamps and Couplers
- Universal 2-Lug Couplers
- Manifold 1:3
- Adapter Bushings/Couplers

Contact customer service 1-800-579-1431 for specification and pricing.

PREMIUM FUEL LINE

Applications: Conveying gasoline, E-85, diesel, and bio-diesel fuels. **Construction:** Black NBR/PVC cover. NBR tube. Two spiral polyester reinforcement. SAE30R7 style. **Features:** Withstands oil, grease, abrasion, and ozone. **Temp Range:** -40°F to 257°F.

Apache P/N	I.D.	Length	Description	UM	Wt.	Source
10115012	3/16"	Bulk	Fuel Line 30R7	Feet	0.07#	Domestic
10115016	1/4"	Bulk	Fuel Line 30R7	Feet	0.09#	Domestic
10115018	3/8"	Bulk	Fuel Line 30R7	Feet	0.12#	Domestic
10115019	5/16"	Bulk	Fuel Line 30R7	Feet	0.11#	Domestic
10044035	1/4"	2'	Fuel Line/Evap Hose CSP	Each	0.09#	Domestic
10044045	3/8"	2'	Fuel Line/Evap Hose CSP	Each	0.12#	Domestic



HEATER HOSE

Applications: Replacement hose for cars and trucks for higher underhood temperatures.

Construction: EPDM cover and tube. Two spiral polyester reinforcement. **Features:** Withstands corrosive solutions and additives. Resists weathering. **Temp Range:** -40°F to 257°F Red Hose, -40°F to 200°F Black Hose. (Not for steam use)

Apache P/N	I.D.	Length	Description	UM	Wt.	Source
10041200	5/8"	50'	Premium Heater Hose Red	Box	12.00#	Domestic
10041170	5/8"	50'	Standard Heater Hose Black	Box	12.00#	Domestic
10041203	3/4"	50'	Premium Heater Hose Red	Box	13.50#	Domestic
10041180	3/4"	50'	Standard Heater Hose Black	Box	13.50#	Domestic



WINDSHIELD WIPER/VACUUM HOSE

Applications: For windshield washers, vacuum and emissions systems for power accessories. Similar to SAE J1037 specification. **Construction:** Low pressure EPDM tubing, black cover. **Features:** Will not deteriorate from heat, weathering, or ozone. Maintains flexibility at low temperatures. **Temp. range:** -40°F to 257°F (Not for steam use).

Apache P/N	I.D.	Length	Description	Wt.	Source
10044052	5/32"	50'	Windshield washer hose CSP	18#	Domestic
10044070	9/32"	6'	Windshield washer vac CSP	6#	Domestic
10044065	7/32"	6'	Windshield washer vac CSP	6#	Domestic
10044057	7/64"	50'	Windshield washer vac tubing	12#	Domestic
10044054	7/32"	50'	Windshield washer hose	24#	Domestic

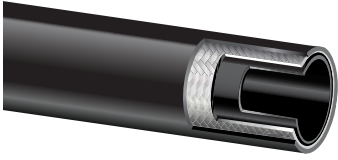


Other Hoses Available:

- Garage Exhaust • Crankcase Vent • Fuel Injection • Radiator Overflow

HYDRAULIC HOSE

Bulk SAE 100R1AT UNIVERSAL™

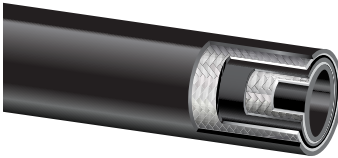


Applications: Medium pressure hydraulic oil lines for use with water and petroleum base hydraulic fluids. Meets/exceeds SAE 100R1AT requirements. **Construction:** Tube is black, oil resistant synthetic rubber (nitrile). Cover is black, oil and weather resistant synthetic rubber (modified nitrile). No skiving required. **Reinforced:** One braid of high tensile steel wire. **Temp. Range:** -40°F to 212°F (-40°C to 100°C).

Apache P/N	I.D. X O.D.	W.P.	BURST	M.B.R.	Wt. FT.	Source
39000683	1/4" x 0.56"	2750	11000	3.94"	0.15#	Import
39000692	3/8" x 0.71"	2250	9000	5.12"	0.21#	Import
39000687	1/2" x 0.85"	2000	8000	7.09"	0.27#	Import
39000694	3/4" x 1.0625"	1250	5000	9.45"	0.38#	Import
39000697	1" x 1.125"	1000	4000	12.00"	0.61#	Import

(Contact Apache for bulk fittings and ferrule options for this hose)

Bulk SAE 100R2AT UNIVERSAL™



Applications: High-pressure hydraulic oil lines for use with water and petroleum base hydraulic fluids. Meets/exceeds SAE 100R2AT requirements. **Construction:** Tube is black, oil resistant synthetic rubber (nitrile). Cover is black, oil, abrasion and weather resistant synthetic rubber (modified nitrile). No skiving required. **Reinforced:** Two braids of high tensile steel wire. **Temp. Range:** -40°F to 212°F (-40°C to 100°C).

Apache P/N	I.D. X O.D.	W.P.	BURST	M.B.R.	Wt. FT.	Source
39000654	1/4" x 0.60"	5000	20000	3.94"	0.24#	Import
39000658	3/8" x 0.77"	4000	16000	5.12"	0.32#	Import
39000660	1/2" x 0.91"	3500	14000	7.09"	0.40#	Import
39000664	3/4" x 1.16"	2250	9000	9.45"	0.57#	Import
39000666	1" x 1.53"	2000	8000	12.00"	0.90#	Import

Contact Apache for bulk fittings and ferrule options for this hose.



The fluid power products you need today are now available from a convenient and reliable source—your local distributor. As an Authorized Gates Service Center, Apache can provide you with immediate solutions to your application challenges. From custom made hose assemblies while you wait, to industrial hose products, equipment assistance and application support, Apache is your one-stop shop for maximizing uptime. The Authorized Gates Service Center offers: trained personnel, inventory of Gates products, assemblies on demand, fast service and a clean and friendly environment.

ADDITIONAL HYDRAULIC PRODUCTS

Hose: Extremely High to Low Pressure • Thermoplastic • Teflon® • Refrigerant • Hot Oil

Couplings: Permanent • Reusable • Specialty • O-ring Flange • Metric • Adapters

Accessories: Quick Disconnects • Gauges • Protective Sleeves • Spring Guards • Bend Restrictors •

Hose Cut Off Blades • Crimpers

CALL APACHE CUSTOMER SERVICE WITH THE BRAND / MODEL# OF YOUR EQUIPMENT FOR A GATES QUICK-PIK™ AND AIM™ HYDRAULIC RECOMMENDATION. 1-800-332-3243



PRESSURE WASHER HOSE

Black 3/8" Hose Assemblies

Applications: Use as a replacement or extension hose on gas/electric pressure washers rated up to 4000 PSI. Use this hose for hot and cold water applications where heavy-duty, high-pressure cleaning equipment is required. **Assemblies:** High-tensile steel, two wire braid hose with two bend restrictors. Male metric adapter use to connect two female metric ends together. **Temp Range:** Laboratory tested for normal service up to 200°F. Other lengths and sizes available upon request.

WARNING: Not for steam service. (Contact customer service for steam hose)

Apache P/N	Length	Coupled	W.P.	Wt. Ea.	Source
10085560	25'	3/8" MPT x 3/8" Male Pipe Swivel	4000	7.25#	Import
10085563	25'	Metric - F x F, w/Male Metric Adapter	4000	7.25#	Import
98388075	25'	3/8" Male x Male Swivel	3000	5.40#	Import
10085570	50'	3/8" MPT x 3/8" Male Pipe Swivel	4000	13.63#	Import
10085573	50'	Metric - F x F, w/Male Metric Adapter	4000	13.65#	Import
10085574	50'	QD - 3/8" Socket x 3/8" Plug	4000	13.65#	Import
98388085	50'	3/8" Male x Male Swivel	3000	11.90#	Import



Blue Non-Marking Hose Assemblies

Applications: Use as a replacement or extension hose on gas/electric pressure washers rated up to 3000 PSI. Use this hose for hot and cold water applications where heavy-duty, high-pressure cleaning equipment is required. **Assemblies:** High-tensile steel, one wire braid hose with one bend restrictor. **Features:** Blue rubber hoses are non-marking. **Temp Range:** Laboratory tested for normal service from -4°F to 200°F.

WARNING: Not for steam service. (Contact customer service for steam hose)

Apache P/N	I.D. x Length	Coupled	W.P.	Wt. Ea.	Source
98388076	3/8" x 25'	3/8" MPT x 3/8" Male Pipe Swivel	3000	5.4#	Domestic
98388086	3/8" x 50'	3/8" MPT x 3/8" Male Pipe Swivel	3000	11.9#	Domestic

Thermoplastic Hose

Applications: Use as a replacement or extension hose on gas/electric pressure washers. For cold water applications only. **Assemblies:** Fabric reinforced hose. **Features:** Scuff and mark resistant construction with bend restrictors for prolonged service life. Hose is 60% lighter than rubber with superior strength and flexibility. **Temp Range:** -4°F to 140°F.

WARNING: Not for steam service. Contact customer service for steam hose.

Apache P/N	I.D. x Length	Coupled	W.P.	Wt. Ea.	Source
10085590	5/16" x 25'	Metric - F x F w/Male Metric Adapter	3700	3.00#	Import
10085591	5/16" x 50'	Metric - F x F	3700	5.25#	Import
10085582	1/4" x 25'	Metric - F x F w/Male Metric Adapter	2600	2.15#	Import

PRESSURE WASHER GUNS

Commercial Pistol Style Gun



Applications: Use as a replacement for original gun on pressure washers rated up to 4500 PSI. Gun outlet accepts 1/4" male pipe thread wands or accessories. Trigger lock helps to prevent accidental spraying.

Installation: Connect hose to 3/8" female pipe thread gun inlet and thread wand into 1/4" female pipe thread gun outlet. **Note:** Additional adapters may be required to complete the connection, depending on your configuration. Includes adapters. Use pipe tape on male pipe threads to ensure leak free connection.

Apache P/N	Inlet x Outlet	W.P.	Temp.	GPM	Wt. Ea.	Source
99023692	3/8" FPT x 1/4" FPT	4500#	300°F	8.0	1.25#	Import

Replacement Gun



Applications: Use as a replacement for original gun on pressure washers rated up to 4000 PSI. For use with metric wands and accessories. Trigger lock helps to prevent accidental spraying. **Installation:** Connect hose to 3/8" FPT gun inlet. **Note:** Use pipe tape on male pipe threads to ensure leak free connection.

Apache P/N	Inlet x Outlet	W.P.	Temp.	GPM	Wt. Ea.	Source
99023686	3/8" FPT x Female Metric	4000#	140°F	7.0	2.5#	Import

Metric Hose, Gun, Wand & Spray Tip Kit

KIT INCLUDES



Gun: 3/8" female pipe thread inlet x female metric outlet, with trigger lock. **Hose:** 3700 PSI - 5/16" x 25', female metric x female metric. **Metric Wand:** Male metric x 1/4" quick disconnect socket.

Adapters: 3/8" male pipe thread x male metric, male metric x 3/8" quick disconnect socket, and a female metric x 3/8" quick disconnect plug. **Spray Tips:** One each of the following "color coded" 1/4" quick disconnect spray tips: 0° (red), 15° (yellow), 25° (green), 40° (white), and one 65° (black) low pressure soap/chemical tip.

Applications: Complete hose/gun/wand/spray tip kit for gas/electric units rated up to 3700 PSI.

Apache P/N	Description	W.P.	Temp.	GPM	Wt. Ea.	Source
99023676	3700# Gun Kit	3700#	140°F	7.0	6.4#	Dom. & Imp.

Ergonomic Gun



Applications: Specifically designed for prolonged usage. Unique reverse trigger and cushioned handle helps reduce hand and wrist fatigue rated up to 3700 PSI. Lightweight body for easy handling.

Installation: Connect hose to 3/8" female pipe thread inlet. **Note:** use pipe tape on male pipe threads to ensure leak free connection.

Apache P/N	Inlet x Outlet	W.P.	Temp.	GPM	Wt. Ea.	Source
99030691	3/8" FPT x Female Metric	3700#	140°F	7.0	2.0#	Import

Gun & Variable Wand Kit



Features: Variable nozzle adjust from 0° to 40° at low (soaping) and high pressure settings. **Applications:** Use as a replacement for original gun on pressure washers rated to 2600 PSI. For use with metric wands and accessories. Trigger lock helps to prevent accidental spraying. **Installation:** Connect hose to male metric gun inlet.

Apache P/N	Description	W.P.	Temp.	GPM	Wt. Ea.	Source
99023801	Male Metric x Female Metric	2600#	140°F	7.0	2.5#	Import

PRESSURE WASHER WANDS

4000# Telescoping Wand

Applications: Eliminates the safety and time issues of using ladders. Wand extends 6' to 18' for fast, easy access to high and hard to reach places from the ground. For use with hot or cold water pressure washers rated up to 4000 PSI. **Construction:** Fiberglass main body with two telescoping extensions. Easily extends or retracts and locks at desired length. **Installation:** Simply insert any spray tip or other accessory with a male metric fitting into end of wand. **Includes:** 15" Extension with quick disconnect socket x male metric used for converting wand outlet to 1/4" QD socket for accepting spray nozzles and accessories.

Apache P/N	Inlet x Outlet	W.P.	Temp.	Wt. Ea.	Source
99023768-C	3/8" QD Plug x 1/4" Female Metric	4000	140°F	15.0#	Import

Replacement Wands

Applications: For hard to reach areas. Wands fit 1/4" female pipe thread pressure washer guns.

Features: Molded grip insulates operator from heat when using hot water and increases control and comfort when operating a pressure washer for extended time. **Note:** Use pipe tape on male pipe threads to ensure leak free connection.

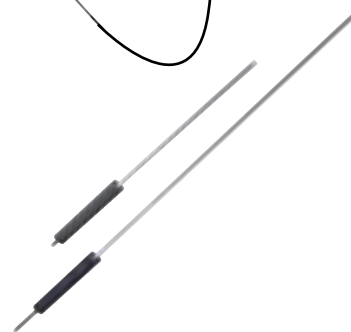
Apache P/N	Description	Length	W.P.	Temp.	Wt. Ea.	Source
99023464-C	1/4" MPT x 1/4" MPT	36"	4500	210°F	1.87#	Import
99023347	1/4" MPT x 1/4" MPT	59"	4500	210°F	2.00#	Import

Easy-Lock Wand

Applications: Metric adapters create a quick and easy "tool free" connection to other wands and accessories.

Features: Easy-lock QD with lock down collar allows for "one-handed" QD connections. Unique design allows for easy release.

Apache P/N	Description	W.P.	Wt. Ea.	Source
99034000-C	Male Metric x 1/4" Easy-Lock QD Socket - 19"	3600	0.9#	Import



PRESSURE WASHER NOZZLES

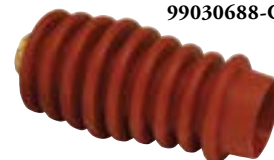
Turbo Nozzles

Applications: Turbo increases cleaning efficiency up to 200%, and filter extends the service life of the nozzle. Quick disconnects create a quick and easy "tool free" connection for nozzles and accessories. **Features:** Hard/soft nozzle features push-pull movement to change from a soft spray (for cleaning wood) to high-pressure. Also includes easy clean filter; unscrew the QD plug from the turbo nozzle, then unscrew the filter to remove it for cleaning. **Installation:** Requires a 1/4" FPT or QD socket on wand. Simply pull back on the QD socket collar to insert or release the hard/soft turbo nozzle. **Note:** Use pipe tape for easy leak free connection on pipe threads.

Apache P/N	Description	PSI	Wt. Ea.	Source
99030688-C	Hard/Soft Turbo Nozzle 1/4" QD Plug	3700#	1.00#	Import
99023611-C	Turbo Nozzle 1/4" FPT	3000#	0.50#	Import



99030688-C



99023611-C

Variable Nozzle

Applications: General purpose nozzle for most pressure washers. **Features:** Push-pull movement changes the spray from low (soap dispensing) to high pressure; turning the nozzle body adjusts the spray pattern from a 0° to 40° fan. **Installation:** Nozzle can be threaded directly onto 1/4" MPT wand, or for a quick and easy connection, use a quick disconnect plug. **Temperature:** 176°F max.

Apache P/N	Description	W.P.	Orifice	Wt. Ea.	Source
99023474-C	1/4" Female Pipe Thread	3000#	3.5	0.40#	Import



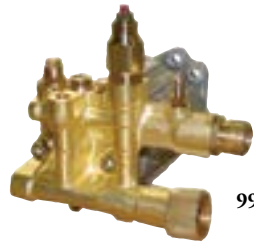


PRESSURE WASHER TIPS

Quick Disconnect (5 pack)

Features: These tips improve the cleaning efficiency of your pressure washer. **Kit Includes:** One each of the following "Color Coded" 1/4" quick disconnect spray tips: 0° (red), 15° (yellow), 25° (green), 40° (white), and one 65° (black) low pressure soap/chemical tip. **Installation:** Tips require a 1/4" QD socket on wand to complete the connection. To install, simply pull back on QD socket collar to insert or release the tip; collar moves back into position when connection/disconnect is complete. **Safety Tip:** Turn off pressure washer and water supply, then depressurize unit. When changing spray tips, make sure tip is firmly seated before restarting the pressure washer.

Apache P/N	Description	W.P.	Orifice	Wt. Ea.	Source
99023778	5 Pack Spray Tip Set	5000	3.5	0.24#	Import
99023779	5 Pack Spray Tip Set	5000	4.0	0.24#	Import



99023597-C

PRESSURE WASHER PUMPS

Applications: Replaces original gas engine driven pressure washer pump. Pump is designed for high-pressure washing applications. **Installation:** Box includes complete instructions. Pumps will work on horizontal or vertical engines with 3/4" shaft ID – hollow. **Inlet:** Female garden hose thread. **Outlet:** Male metric shafts. **Note:** Key stock is not included with pump.

Apache P/N	Description	Max PSI	Max G.P.M.	Wt. Ea.	Source
99023597-C	Horizontal Axial Pump	up to 2700	up to 2.5	8.55#	Import
99023589	Vertical Pump	up to 2300	up to 2.0	9.12#	Import

Other sizes and styles available upon request.



99023589

PRESSURE WASHER ACCESSORIES

High Pressure Soap Applicator

Applications: Designed specifically for vehicle washing allowing you to apply soap at high pressure. New design has a patented application of dispensing of soap quickly on/off action with the turn of a dial. **Installation:** Connect male metric end to gun outlet, and female metric end to wand. (Fits between gun and wand). **Note:** Only for use with Universal pressure washer chemicals. Talk with a sales representative to learn more.

Apache P/N	Description	W.P.	Wt. Ea.	Source
99023865	High Pressure Soap Applicator	4000	1.4#	Import



99023865

Water Broom

Applications: Cleans large areas such as garage floors, driveways, and sidewalks. Without overspray. Back bristles push water in single direction. Non marring wheels. **Installation:** Connect 1/4" quick disconnect socket end to the 1/4" quick disconnect plug on broom. **Note:** To prevent tips clogging flush undercarriage of broom and rinse with clean water thoroughly when finished.

Apache P/N	Description	W.P.	Wt. Ea.	Source
99023860	4-Tip Water Broom	3600	3.1#	Import



99023860

PRESSURE WASHER ADAPTERS

With a variety to choose from, ask about our complete selection of bulk and retail packaged pressure washer adapters.



TWIN LINE WELDING HOSE

Applications: Oxy-acetylene service in steel, metal working, industrial, construction, and agricultural industries. **Construction:** Tube is specially compounded for oxy-acetylene service. Vertically braided rayon cord reinforcement. Smooth cover, red and green line bonded securely together for easy handling.

Fittings: Coupled with female x female, brass oxy-acetylene couplings. Meets RMA-IAA Spec. Grade R. Grade RM, T and other lengths available upon request. Male x male welding hose adapters are available by request.



Apache P/N	I.D. x O.D.	Length	Grade	Max. W.P.	Wt. Ea.	Source
10066850	3/16" x 0.44"	25'	R	200	4#	Domestic
10066855	3/16" x 0.44"	50'	R	200	7#	Domestic
10066875	1/4" x 0.53"	25'	R	200	6#	Domestic
10066880	1/4" x 0.53"	50'	R	200	10#	Domestic

WATER HOSE

Heavy-Duty Contractor Grade

Applications: 100% EPDM rubber, heavy-duty MGHT x FGHT solid brass couplings and one bend restrictor. **Benefits:** Resists sunlight, abrasion, kinking and cracking; flexible in freezing temperatures. Bend restrictor promotes longer life. **Temperature:** -40°F to 200°F (-40°C to 90°C).



Apache P/N	I.D. x Length	W.P.	Burst	Wt. Ea.	Source
98108797	5/8" x 25'	150	450	6.6#	Domestic
98108798	5/8" x 50'	150	450	12.8#	Domestic
98108799	5/8" x 75'	150	450	14.1#	Domestic
98108800	5/8" x 100'	150	450	25.3#	Domestic
98108802	3/4" x 25'	150	450	9.2#	Domestic
98108804	3/4" x 50'	150	450	18.1#	Domestic
98108806	3/4" x 75'	150	450	27.0#	Domestic
98108809	3/4" x 100'	150	450	35.8#	Domestic

Water Hose Quick Disconnect Adapter Set

Construction: Quick disconnect socket x female garden hose thread • Quick disconnect plug x male garden hose thread. **Applications:** Eliminates threaded hook-up. Quick and easy "tool free" connection to 3/4" water hose threaded attachments. Use on faucets, garden hose, pump inlets.

Apache P/N	W.P.	Wt. Ea.	Source
44048664	200	0.2#	Import



Fog Nozzle

Construction: Shatterproof and UV resistant GE Lexan® is able to withstand tough environmental conditions. Seals used for true water shut off. Easy twist spray pattern adjustment. **Applications:** Fire prevention, containment/washdown, construction, and industrial. **Features:** Provides constant volume at any spray angle. Use with water transfer pumps or direct water supply.

Apache P/N	Thread Size	W.P.	Wt. Ea.	Source
46045000	3/4"	100	0.32#	Import





FUEL NOZZLES

Auto Shut-off - UL®

Construction: Inlet; 3/4" or 1" female pipe thread. Hold-open handle clip for fast, effortless filling. Small, trim and lightweight with a low profile aluminum body and a full hand insulator that protects the vehicle from scratches and nicks, and insulates hand when in use. U/L approved. **Applications:** Designed for fuel applications requiring an auto shut-off. For use with gasoline, 15% ethanol, methanol and gasoline blends. **Features:** A minimum of 10 PSI is required to operate the auto shut-off. Do not use on gravity flow systems.

Apache P/N	Connection	Description	Spout	Wt. Ea.	Source
99000246	3/4" Female Pipe Thread	Unleaded Nozzle/Red	13/16"	2.9#	Import
99000239	3/4" Female Pipe Thread	Farm Fuel Nozzle/Blue	15/16"	2.9#	Import
99000247	1" Female Pipe Thread	Diesel Nozzle/Green	1-3/16"	4.0#	Import

CURB PUMP HOSE

Assemblies

Soft Wall: Coupled Male x Male - UL®

Construction: Tube is NBR reinforced with a spiral polyester cord. Cover is oil and weather resistant. U/L and U/LC approved. **Applications:** Designed for curb pump self serve stations and highly sensitive electronic fuel pumps. Recommended up to 15% ethanol. Not recommended for bio-diesel. **Assemblies:** Coupled with MPT internally expanded fittings that are capped to protect the threads. Assemblies tested for static conductivity.



Apache P/N	Description	W.P.	Wt. Ea.	Source
98108610	3/4" x 10'	200	3.7#	Domestic
98108630	3/4" x 14'	200	5.0#	Domestic
98108645	3/4" x 20'	200	6.9#	Domestic
98108646	1" x 10'	150	5.0#	Domestic
98108650	1" x 14'	150	6.7#	Domestic
98108658	1" x 20'	150	9.2#	Domestic

Hard Wall: Coupled Male x Male

Construction: Tube is NBR reinforced with one-wire braid. Cover is oil and weather resistant. U/L and U/LC approved. **Applications:** Designed for curb pump self serve stations and highly sensitive electronic fuel pumps. Recommended up to 15% ethanol. Not recommended for bio-diesel. **Assemblies:** Coupled with MPT internally expanded fittings that are capped to protect the threads. Assemblies tested for static conductivity.



Apache P/N	Description	W.P.	Wt. Ea.	Source
98108675	3/4" x 10'	250	4.9#	Domestic
98108695	3/4" x 14'	250	6.6#	Domestic
98108710	3/4" x 20'	250	9.2#	Domestic
98108711	1" x 10'	150	6.0#	Domestic
98108713	1" x 14'	150	8.03	Domestic
98108718	1" x 20'	150	11.1#	Domestic



Warranty

All merchandise manufactured or assembled by Apache is warranted at the time of shipment to be free from defects in material and manufacturing (provided such merchandise is properly installed and used only for the intended purpose and under normal service conditions). Liability with respect to any such merchandise proven defective, is limited to buyer's net purchase price or (at Apache's discretion) to the repair or replacement thereof upon its return to Apache, freight prepaid. In no event shall Apache be liable to supply or pay for labor, downtime, or any loss or damage, either direct, incidental, or consequential. All merchandise supplied by Apache but designed, manufactured and assembled by others shall be accepted by Buyer with only those warranties made by such vendors or manufacturers and in lieu of any additional warranties on the part of Apache. This warranty is expressly made in lieu of any and all other warranties, including the warranty of merchantability and fitness for a particular purpose.

Return Materials

Any customer seeking to return material(s), for any reason, must first secure permission from an authorized customer service representative. A Return Material(s) Authorization number (RMA) will be issued. This number must appear on the material, packing list, and bill of lading so the Receiving Clerk can verify authorization for return. Absence of an RMA number shall constitute the right to refuse shipment.

DUE TO CONTINUAL PRODUCT IMPROVEMENT, APACHE RESERVES THE RIGHT TO ALTER SPECS AND PRICES WITHOUT PRIOR NOTICE.

Our expert customer service personnel are available toll free to help recommend hose, hose assemblies, belt, belt fabrications, hose, and hose assemblies for your particular requirements. Whether it be hose or belting, we represent a wide variety of vendors who specialize in manufacturing quality goods.

Call us and let us work for you.



CORPORATE HEADQUARTERS

CEDAR RAPIDS, IA
Phone: 319-365-0471
Toll Free: 866-757-7816
Fax: 319-365-2522
www.apache-inc.com

CONSUMER PRODUCTS DIVISION

Phone: 319-365-0471
Toll Free: 800-459-8423
Fax: 319-365-6714

100% EMPLOYEE OWNED



ISO 9001:2008 CERTIFIED

PROUD MEMBER OF:

